

SPACEGUARD
PRODUCTS™

SG2000

High Security Partition Systems



Standard-Size Wire Panels

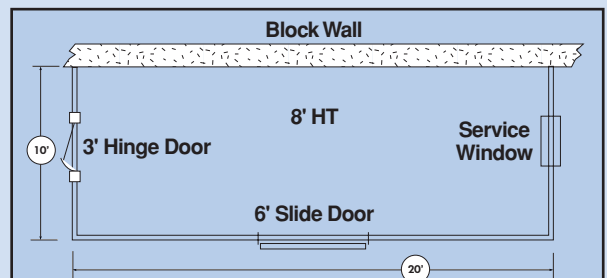
| 4' HIGH PANELS | | | | 5' HIGH PANELS | | | |
|----------------|----------|--------------|---------|----------------|----------|--------------|---------|
| Stock Number | WxH | Stock Number | WxH | Stock Number | WxH | Stock Number | WxH |
| AP40 | 10' x 4' | AP45 | 5' x 4' | AP50 | 10' x 5' | AP55 | 5' x 5' |
| AP49 | 9' x 4' | AP44 | 4' x 4' | AP59 | 9' x 5' | AP54 | 4' x 5' |
| AP48 | 8' x 4' | AP43 | 3' x 4' | AP58 | 8' x 5' | AP53 | 3' x 5' |
| AP47 | 7' x 4' | AP42 | 2' x 4' | AP57 | 7' x 5' | AP52 | 2' x 5' |
| AP46 | 6' x 4' | AP41 | 1' x 4' | AP56 | 6' x 5' | AP51 | 1' x 5' |

Specially engineered for increased versatility and customization.

If you need a modular, stackable system with the ability to work beyond a traditional partition system, you need SpaceGuard 2000. With a structure that is as versatile and easy to use as it is durable. SpaceGuard 2000 is ideal for additional heights, robotic security, or DEA certified enclosures. **Available in welded or woven wire mesh.**

Complete installation instructions and attachment hardware are included. Please specify color. Stock color is gray. Other colors available are blue, yellow, black, red, and green. Please allow longer lead times for non-stock colors.

• FOB IN



HOW TO ORDER

Make a rough floor plan of area to be enclosed noting overall measurements. Fax plan to:
800-428-5758

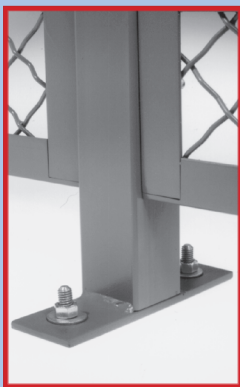
To request help, call us at
800-841-0680

Specifications

Panels: 10 gauge triple crimple steel wire woven in 1 1/2" diamond mesh or, optional 6 gauge- 1 1/2" x 2 1/2" welded wire steel mesh, securely welded to frames. Frames made of 1 1/4" x 1 1/4" x 1/8" roll formed angle, with all joints welded. Frame equipped with slotted holes for quick mounting.

Posts: 14 gauge steel of 2" x 2" square tube. Base plates of 2" x 7" x 1/4" steel flat stock welded to posts for secure anchoring to floor. Posts drilled to accept 5/16" hardware for doors and panels.

Finish: Phosphate washed with a standard finish of **polyester powder coat** high quality gray or 5 additional colors. Please consult factory for information on custom colors. Additional packaging charges may be required.



Standard Posts

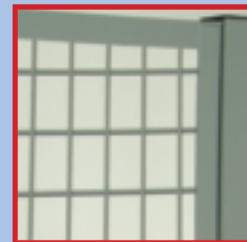
| 8' 3/4" High | |
|--------------|--------|
| Part No. | Type |
| APTC01 | Corner |
| APTL01 | Run |
| APTT01 | Tee |
| APTD01 | Door |

| 10' 3/4" High | |
|---------------|--------|
| Part No. | Type |
| APTC02 | Corner |
| APTL02 | Run |
| APTT02 | Tee |
| APTD02 | Door |



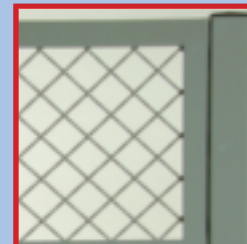
Flex Panel

| Part No. | Size |
|----------|------|
| AFLEX8 | 8' |
| AFLEX10 | 10' |



Choose from either 6 gauge 1 1/2" x 2 1/2" rectangular welded wire mesh...

OR



10 gauge 1 1/2" diamond woven wire mesh.



SG2000

Doors & Service Windows

Sliding Doors

Doors constructed of same material as panels. Utilizes two wheel trolleys rolling in an enclosed track. A wide assortment of widths, heights, and door arrangements are available to meet your needs. All doors are furnished with necessary hardware to install and operate.

Specify color when ordering.

FOB IN



Single slide door



Single hinge door

Hinged doors are constructed using the same durable material as our panels. Please specify hinge left or right and swing in or out. All doors include hardware for easy installation and relocation.

FOB IN

SINGLE SLIDE DOORS (No Transom)

7' Doors

| WXH | Stock No. | Lbs. |
|--------|-----------|------|
| 3'x7' | ASD37 | 76 |
| 4'x7' | ASD47 | 83 |
| 5'x7' | ASD57 | 95 |
| 6'x7' | ASD67 | 153 |
| 8'x7' | ASD87 | 186 |
| 10'x7' | ASD07 | 219 |

10' Doors

| WXH | Stock No. | Lbs. |
|---------|-----------|------|
| 3'x10' | ASD30 | 90 |
| 4'x10' | ASD40 | 100 |
| 5'x10' | ASD50 | 126 |
| 6'x10' | ASD60 | 182 |
| 8'x10' | ASD80 | 219 |
| 10'x10' | ASD00 | 256 |

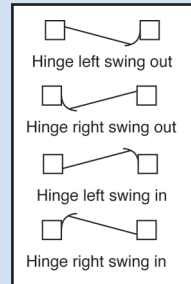
8' Doors

| WXH | Stock No. | Lbs. |
|--------|-----------|------|
| 3'x8' | ASD38 | 81 |
| 4'x8' | ASD48 | 89 |
| 5'x8' | ASD58 | 114 |
| 6'x8' | ASD68 | 165 |
| 8'x8' | ASD88 | 197 |
| 10'x8' | ASD08 | 231 |



Locks ordered separately. Several lock options available upon request.

Finished with
Polyester Powder Coat
for maximum durability!



SINGLE WIDTH HINGED DOORS

| WxH | Stock No. | Transom | Lbs. |
|--------|-----------|---------|------|
| 3'x7' | AHD37 | NONE | 46 |
| 4'x7' | AHD47 | NONE | 56 |
| 3'x8' | AHD38 | 1' | 54 |
| 4'x8' | AHD48 | 1' | 65 |
| 3'x10' | AHD30 | 3' | 56 |
| 4'x10' | AHD40 | 3' | 68 |

Stock Service Windows

Slide-up window with shelf (shown)

Window is 24"x21½" high and slides up for servicing. Window has lift catches. Wt.30 Lbs. Specify Color. FOB IN

Fold-down window

Opening is 24"x15"H, with 23½"x15¾" deep shelf. Bottom hinged sheet metal closure forms shelf. Wt.18 Lbs. Specify Color. FOB IN



Local Distributor: